



WORLD VOYAGER



Intimate Yacht

Designed with a 1940s aesthetic inspired by the new millennium, **World Voyager** is a modern classic. Complete with sumptuous accommodations, attentive service, globally inspired gourmet cuisine and unlimited premium cocktails, this small ship is designed for you to explore the world in relaxed, unhurried luxury.

Make Yourself at Home

Aboard the **World Voyager** you will find everything you want and need. With three decks of spacious and elevated accommodations, multiple onboard dining options, spa and sauna amenities, social spaces for gathering with your fellow travelers and more, **World Voyager** has been designed to deliver relaxed luxury and highly personalized service.

Conscious Navigation

An innovative hydro-jet propulsion system allows the purpose-built **World Voyager** to bring you closer to your destinations. The system keeps our yachts quieter and allows us to get closer to wildlife without disturbing their habitat, making for up-close and personal encounters with nature that leave you in awe.

SHIP SPECIFICATIONS

Registry: Portugal	Length: 423 feet
Guest Decks: 6	Beam: 62 feet
Number of Guest Cabins: 100	Draft: 15 feet
Guest capacity: 198	Tonnage: 10,000 tons
Number of Crew: 118	Speed: 16 knots
Language spoken by Crew: English	Zodiacs: 12

STATEROOM FEATURES

The luxurious comfort of your suite or stateroom offers the perfect place to unwind and relax. All accommodations include a marble spa bath and a spacious living room or sitting area. Enjoy seascape views from the comfort of your balcony or from your panoramic window. Staterooms and suites range in size from 185 to 465 sq. ft.

- Individual temperature control
- Minibar
- Nespresso Coffee and Kusmi Teas
- Still and sparkling water in reusable glass bottles
- L'Occitane bath amenities
- Walk-in mosaic glass shower with rain head and body jets
- Plush terry bathrobes and slippers
- Portuguese cotton linens
- Option to convert queen bed into two singles
- Spacious wardrobe



- Wall-mounted television with infotainment system
- Complimentary use of binoculars
- 110V American/220V European
- USB port



WORLD VOYAGER

SHIP FACILITIES & GUEST SERVICES

24-hour Room Service including Spirits, Wine and Beer

Wi-Fi Internet Access*

Running Track/Outdoor Fitness Area

Dome Observation Lounge

Pool & Hot Tubs

Grill & Pool Bar

Sundeck

Water's Edge Observation Deck

Zephyr Lounge

Fitness Studio

Atlas Lounge

Medical Center

Boutique

Auditorium

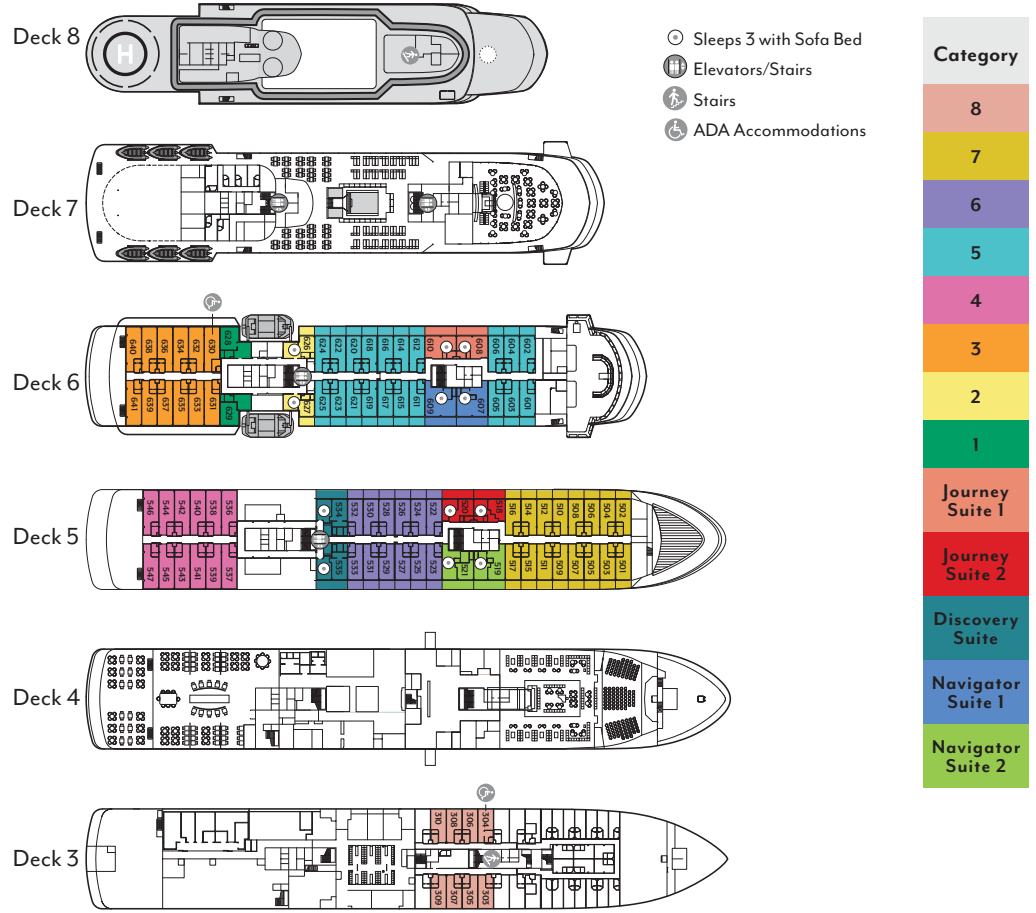
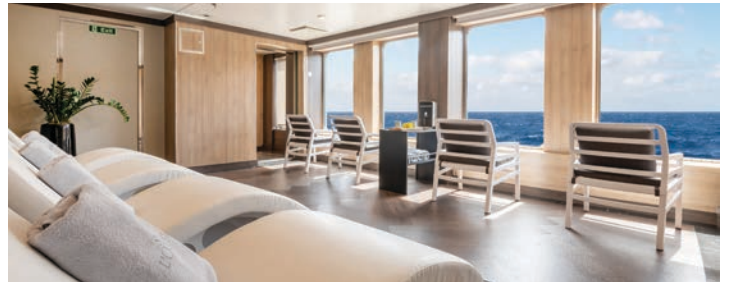
L'Occitane Seaspa & Sauna

Main Restaurant with both Indoor and Alfresco Dining

Laundry service

**These services are provided by a satellite connection, which may be sporadic due to weather conditions or boat movement.*

Internet services are complimentary.



Onboard Life

At Atlas Ocean Voyages, we encourage a holistic approach to life that melds mind, body and spirit. Connect with like-spirited explorers during Après Sea and satisfy your curiosity with exceptional guest lecturers to relish every aspect of a stimulating journey. We cultivate an atmosphere of overall well-being in every space on board

World Voyager.

Dining

Your culinary adventures on board rival your discoveries ashore, as our well-traveled chefs take inspiration from a wide array of global cuisines when creating their ever-changing menus. And like your shoreside travels, your culinary exploration on board is designed to engage all of the senses. Relaxed and unhurried, each meal on board becomes another memorable experience to savor with friends.

Smoking Policy

On **World Voyager**, the health, welfare and comfort of our guests and crew are top priority for us. We have designated areas to accommodate smoking and do not permit smoking in suites, staterooms or on balconies.

Medical Services

We have a Medical Center onboard staffed with a licensed doctor for non-emergency and emergency services. These services are available at an additional cost. The Medical Center is designed for temporary illnesses or accidents.